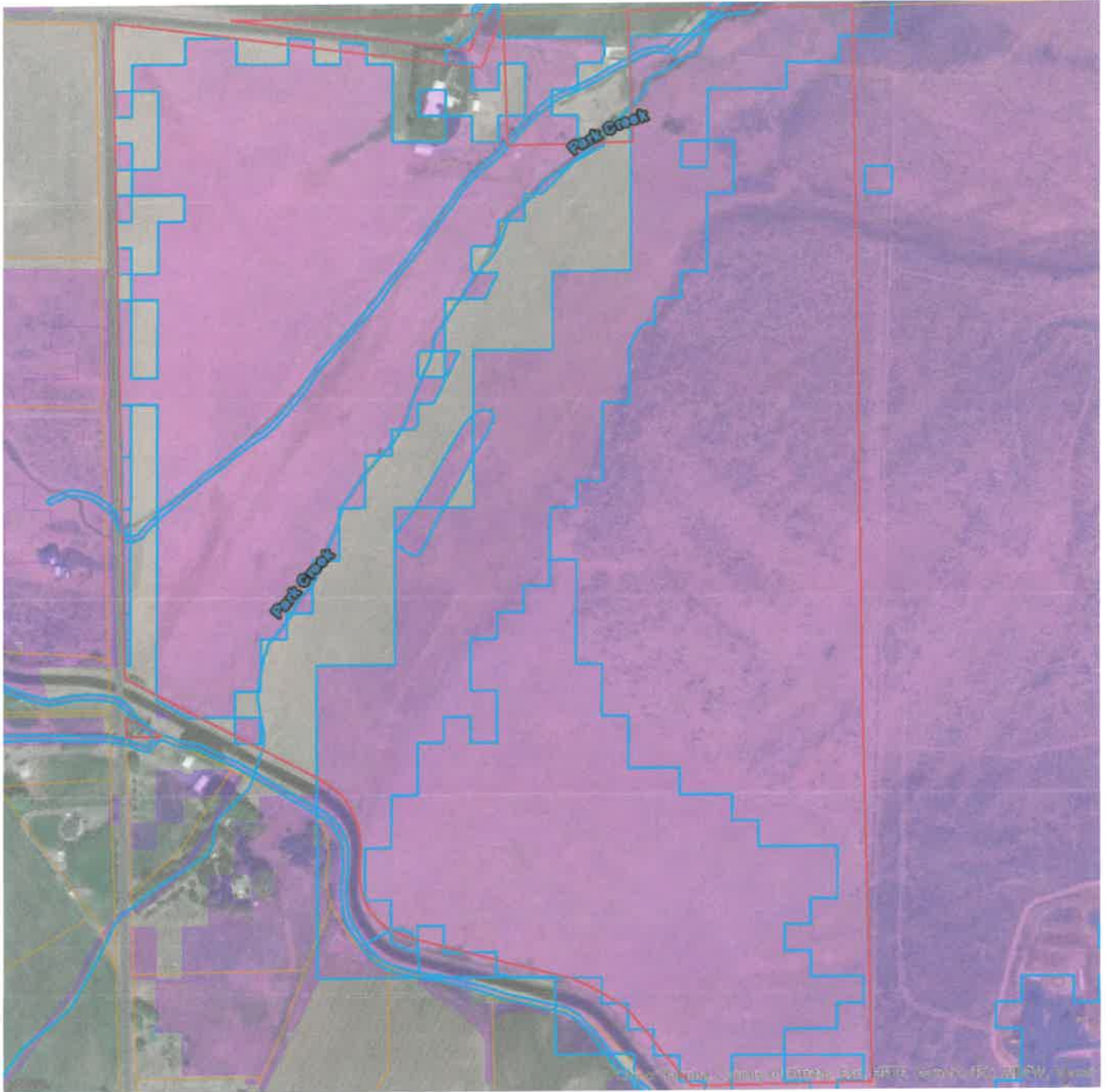




Priority Habitats and Species on the Web



Report Date: 06/03/2024, Parcel ID: [18-20-34000-0011](#)

PHS Species/Habitats Overview:

RECEIVED
DEC 03 2024

Kittitas County CDS

Occurrence Name	Federal Status	State Status	Sensitive Location
Rainbow Trout	N/A	N/A	No
Freshwater Emergent Wetland	N/A	N/A	No
Freshwater Forested/Shrub Wetland	N/A	N/A	No
Riverine	N/A	N/A	No
Shrubsteppe	N/A	N/A	No
Biodiversity Areas And Corridor	N/A	N/A	No
Golden eagle		Candidate	Yes

PHS Species/Habitats Details:

Rainbow Trout	
Scientific Name	<i>Oncorhynchus mykiss</i>
Priority Area	Occurrence/Migration
Site Name	Park Creek
Accuracy	NA
Notes	LLID: 1204747469396, Fish Name: Rainbow Trout, Run Time: Unknown or not Applicable, Life History: Resident
Source Record	4347
Source Dataset	SWIFD
Federal Status	N/A
State Status	N/A
PHS Listing Status	PHS Listed Occurrence
Sensitive	N
SGCN	N
Display Resolution	AS MAPPED
More Info	http://wdfw.wa.gov/wlm/diversty/soc/soc.htm
Geometry Type	Lines

Freshwater Emergent Wetland

Priority Area	Aquatic Habitat
Site Name	N/A
Accuracy	NA
Notes	Wetland System: Freshwater Emergent Wetland - NWI Code: PEM1C
Source Dataset	NWIIWetlands
Source Name	Not Given
Source Entity	US Fish and Wildlife Service
Federal Status	N/A
State Status	N/A
PHS Listing Status	PHS Listed Occurrence
Sensitive	N
SGCN	N
Display Resolution	AS MAPPED
ManagementRecommendations	http://www.ecy.wa.gov/programs/sea/wetlands/bas/index.html
Geometry Type	Polygons

Freshwater Emergent Wetland

Priority Area	Aquatic Habitat
Site Name	N/A
Accuracy	NA
Notes	Wetland System: Freshwater Emergent Wetland - NWI Code: PEM1C
Source Dataset	NWIIWetlands
Source Name	Not Given
Source Entity	US Fish and Wildlife Service
Federal Status	N/A
State Status	N/A
PHS Listing Status	PHS Listed Occurrence
Sensitive	N
SGCN	N
Display Resolution	AS MAPPED
ManagementRecommendations	http://www.ecy.wa.gov/programs/sea/wetlands/bas/index.html
Geometry Type	Polygons

Freshwater Emergent Wetland

Priority Area	Aquatic Habitat
Site Name	N/A
Accuracy	NA
Notes	Wetland System: Freshwater Emergent Wetland - NWI Code: PEM1C
Source Dataset	NWIIWetlands
Source Name	Not Given
Source Entity	US Fish and Wildlife Service
Federal Status	N/A
State Status	N/A
PHS Listing Status	PHS Listed Occurrence
Sensitive	N
SGCN	N
Display Resolution	AS MAPPED
ManagementRecommendations	http://www.ecy.wa.gov/programs/sea/wetlands/bas/index.html
Geometry Type	Polygons

Freshwater Forested/Shrub Wetland

Priority Area	Aquatic Habitat
Site Name	N/A
Accuracy	NA
Notes	Wetland System: Freshwater Forested/Shrub Wetland - NWI Code: PSSC
Source Dataset	NWIIWetlands
Source Name	Not Given
Source Entity	US Fish and Wildlife Service
Federal Status	N/A
State Status	N/A
PHS Listing Status	PHS Listed Occurrence
Sensitive	N
SGCN	N
Display Resolution	AS MAPPED
ManagementRecommendations	http://www.ecy.wa.gov/programs/sea/wetlands/bas/index.html
Geometry Type	Polygons

Riverine	
Priority Area	Aquatic Habitat
Site Name	N/A
Accuracy	NA
Notes	Wetland System: Riverine - NWI Code: R4SBCx
Source Dataset	NWIWetlands
Source Name	Not Given
Source Entity	US Fish and Wildlife Service
Federal Status	N/A
State Status	N/A
PHS Listing Status	PHS Listed Occurrence
Sensitive	N
SGCN	N
Display Resolution	AS MAPPED
ManagementRecommendations	http://www.ecy.wa.gov/programs/sea/wetlands/bas/index.html
Geometry Type	Polygons

Shrubsteppe	
Priority Area	Habitat Feature
Site Name	Kittitas County Presumptive Shrubsteppe
Accuracy	NA
Notes	General location of Shrubsteppe. Confirm or refute with site-scale info. WDFW recommends using site-scale info to inform site-scale land use decisions. Expect that on-the-ground conditions (e.g., boundaries) will vary from the map.
Source Record	920870
Source Name	Keith Folkerts, WDFW
Source Entity	WA Dept. of Fish and Wildlife
Federal Status	N/A
State Status	N/A
PHS Listing Status	PHS LISTED OCCURRENCE
Sensitive	N
SGCN	N
Display Resolution	AS MAPPED
Geometry Type	Polygons

Shrubsteppe	
Priority Area	Habitat Feature
Site Name	Kittitas County Presumptive Shrubsteppe
Accuracy	NA
Notes	General location of Shrubsteppe. Confirm or refute with site-scale info. WDFW recommends using site-scale info to inform site-scale land use decisions. Expect that on-the-ground conditions (e.g., boundaries) will vary from the map.
Source Record	920870
Source Name	Keith Folkerts, WDFW
Source Entity	WA Dept. of Fish and Wildlife
Federal Status	N/A
State Status	N/A
PHS Listing Status	PHS LISTED OCCURRENCE
Sensitive	N
SGCN	N
Display Resolution	AS MAPPED
Geometry Type	Polygons

Shrubsteppe	
Priority Area	Habitat Feature
Site Name	Kittitas County Presumptive Shrubsteppe
Accuracy	NA
Notes	General location of Shrubsteppe. Confirm or refute with site-scale info. WDFW recommends using site-scale info to inform site-scale land use decisions. Expect that on-the-ground conditions (e.g., boundaries) will vary from the map.
Source Record	920870
Source Name	Keith Folkerts, WDFW
Source Entity	WA Dept. of Fish and Wildlife
Federal Status	N/A
State Status	N/A
PHS Listing Status	PHS LISTED OCCURRENCE
Sensitive	N
SGCN	N
Display Resolution	AS MAPPED
Geometry Type	Polygons

Shrubsteppe	
Priority Area	Habitat Feature
Site Name	Kittitas County Presumptive Shrubsteppe
Accuracy	NA
Notes	General location of Shrubsteppe. Confirm or refute with site-scale info. WDFW recommends using site-scale info to inform site-scale land use decisions. Expect that on-the-ground conditions (e.g., boundaries) will vary from the map.
Source Record	920870
Source Name	Keith Folkerts, WDFW
Source Entity	WA Dept. of Fish and Wildlife
Federal Status	N/A
State Status	N/A
PHS Listing Status	PHS LISTED OCCURRENCE
Sensitive	N
SGCN	N
Display Resolution	AS MAPPED
Geometry Type	Polygons

Shrubsteppe	
Priority Area	Habitat Feature
Site Name	Kittitas County Presumptive Shrubsteppe
Accuracy	NA
Notes	General location of Shrubsteppe. Confirm or refute with site-scale info. WDFW recommends using site-scale info to inform site-scale land use decisions. Expect that on-the-ground conditions (e.g., boundaries) will vary from the map.
Source Record	920870
Source Name	Keith Folkerts, WDFW
Source Entity	WA Dept. of Fish and Wildlife
Federal Status	N/A
State Status	N/A
PHS Listing Status	PHS LISTED OCCURRENCE
Sensitive	N
SGCN	N
Display Resolution	AS MAPPED
Geometry Type	Polygons

Shrubsteppe	
Priority Area	Habitat Feature
Site Name	Kittitas County Presumptive Shrubsteppe
Accuracy	NA
Notes	General location of Shrubsteppe. Confirm or refute with site-scale info. WDFW recommends using site-scale info to inform site-scale land use decisions. Expect that on-the-ground conditions (e.g., boundaries) will vary from the map.
Source Record	920870
Source Name	Keith Folkerts, WDFW
Source Entity	WA Dept. of Fish and Wildlife
Federal Status	N/A
State Status	N/A
PHS Listing Status	PHS LISTED OCCURRENCE
Sensitive	N
SGCN	N
Display Resolution	AS MAPPED
Geometry Type	Polygons

Shrubsteppe	
Priority Area	Habitat Feature
Site Name	Kittitas County Presumptive Shrubsteppe
Accuracy	NA
Notes	General location of Shrubsteppe. Confirm or refute with site-scale info. WDFW recommends using site-scale info to inform site-scale land use decisions. Expect that on-the-ground conditions (e.g., boundaries) will vary from the map.
Source Record	920870
Source Name	Keith Folkerts, WDFW
Source Entity	WA Dept. of Fish and Wildlife
Federal Status	N/A
State Status	N/A
PHS Listing Status	PHS LISTED OCCURRENCE
Sensitive	N
SGCN	N
Display Resolution	AS MAPPED
Geometry Type	Polygons

Shrubsteppe	
Priority Area	Habitat Feature
Site Name	Kittitas County Presumptive Shrubsteppe
Accuracy	NA
Notes	General location of Shrubsteppe. Confirm or refute with site-scale info. WDFW recommends using site-scale info to inform site-scale land use decisions. Expect that on-the-ground conditions (e.g., boundaries) will vary from the map.
Source Record	920870
Source Name	Keith Folkerts, WDFW
Source Entity	WA Dept. of Fish and Wildlife
Federal Status	N/A
State Status	N/A
PHS Listing Status	PHS LISTED OCCURRENCE
Sensitive	N
SGCN	N
Display Resolution	AS MAPPED
Geometry Type	Polygons

Shrubsteppe	
Priority Area	Habitat Feature
Site Name	Kittitas County Presumptive Shrubsteppe
Accuracy	NA
Notes	General location of Shrubsteppe. Confirm or refute with site-scale info. WDFW recommends using site-scale info to inform site-scale land use decisions. Expect that on-the-ground conditions (e.g., boundaries) will vary from the map.
Source Record	920870
Source Name	Keith Folkerts, WDFW
Source Entity	WA Dept. of Fish and Wildlife
Federal Status	N/A
State Status	N/A
PHS Listing Status	PHS LISTED OCCURRENCE
Sensitive	N
SGCN	N
Display Resolution	AS MAPPED
Geometry Type	Polygons

Shrubsteppe	
Priority Area	Habitat Feature
Site Name	Kittitas County Presumptive Shrubsteppe
Accuracy	NA
Notes	General location of Shrubsteppe. Confirm or refute with site-scale info. WDFW recommends using site-scale info to inform site-scale land use decisions. Expect that on-the-ground conditions (e.g., boundaries) will vary from the map.
Source Record	920870
Source Name	Keith Folkerts, WDFW
Source Entity	WA Dept. of Fish and Wildlife
Federal Status	N/A
State Status	N/A
PHS Listing Status	PHS LISTED OCCURRENCE
Sensitive	N
SGCN	N
Display Resolution	AS MAPPED
Geometry Type	Polygons

Shrubsteppe	
Priority Area	Habitat Feature
Site Name	Kittitas County Presumptive Shrubsteppe
Accuracy	NA
Notes	General location of Shrubsteppe. Confirm or refute with site-scale info. WDFW recommends using site-scale info to inform site-scale land use decisions. Expect that on-the-ground conditions (e.g., boundaries) will vary from the map.
Source Record	920870
Source Name	Keith Folkerts, WDFW
Source Entity	WA Dept. of Fish and Wildlife
Federal Status	N/A
State Status	N/A
PHS Listing Status	PHS LISTED OCCURRENCE
Sensitive	N
SGCN	N
Display Resolution	AS MAPPED
Geometry Type	Polygons

Shrubsteppe	
Priority Area	Habitat Feature
Site Name	Kittitas County Presumptive Shrubsteppe
Accuracy	NA
Notes	General location of Shrubsteppe. Confirm or refute with site-scale info. WDFW recommends using site-scale info to inform site-scale land use decisions. Expect that on-the-ground conditions (e.g., boundaries) will vary from the map.
Source Record	920870
Source Name	Keith Folkerts, WDFW
Source Entity	WA Dept. of Fish and Wildlife
Federal Status	N/A
State Status	N/A
PHS Listing Status	PHS LISTED OCCURRENCE
Sensitive	N
SGCN	N
Display Resolution	AS MAPPED
Geometry Type	Polygons

Shrubsteppe	
Priority Area	Habitat Feature
Site Name	Kittitas County Presumptive Shrubsteppe
Accuracy	NA
Notes	General location of Shrubsteppe. Confirm or refute with site-scale info. WDFW recommends using site-scale info to inform site-scale land use decisions. Expect that on-the-ground conditions (e.g., boundaries) will vary from the map.
Source Record	920870
Source Name	Keith Folkerts, WDFW
Source Entity	WA Dept. of Fish and Wildlife
Federal Status	N/A
State Status	N/A
PHS Listing Status	PHS LISTED OCCURRENCE
Sensitive	N
SGCN	N
Display Resolution	AS MAPPED
Geometry Type	Polygons

Shrubsteppe	
Priority Area	Habitat Feature
Site Name	Kittitas County Presumptive Shrubsteppe
Accuracy	NA
Notes	General location of Shrubsteppe. Confirm or refute with site-scale info. WDFW recommends using site-scale info to inform site-scale land use decisions. Expect that on-the-ground conditions (e.g., boundaries) will vary from the map.
Source Record	920870
Source Name	Keith Folkerts, WDFW
Source Entity	WA Dept. of Fish and Wildlife
Federal Status	N/A
State Status	N/A
PHS Listing Status	PHS LISTED OCCURRENCE
Sensitive	N
SGCN	N
Display Resolution	AS MAPPED
Geometry Type	Polygons

Shrubsteppe	
Priority Area	Habitat Feature
Site Name	Kittitas County Presumptive Shrubsteppe
Accuracy	NA
Notes	General location of Shrubsteppe. Confirm or refute with site-scale info. WDFW recommends using site-scale info to inform site-scale land use decisions. Expect that on-the-ground conditions (e.g., boundaries) will vary from the map.
Source Record	920870
Source Name	Keith Folkerts, WDFW
Source Entity	WA Dept. of Fish and Wildlife
Federal Status	N/A
State Status	N/A
PHS Listing Status	PHS LISTED OCCURRENCE
Sensitive	N
SGCN	N
Display Resolution	AS MAPPED
Geometry Type	Polygons

Shrubsteppe	
Priority Area	Habitat Feature
Site Name	Kittitas County Presumptive Shrubsteppe
Accuracy	NA
Notes	General location of Shrubsteppe. Confirm or refute with site-scale info. WDFW recommends using site-scale info to inform site-scale land use decisions. Expect that on-the-ground conditions (e.g., boundaries) will vary from the map.
Source Record	920870
Source Name	Keith Folkerts, WDFW
Source Entity	WA Dept. of Fish and Wildlife
Federal Status	N/A
State Status	N/A
PHS Listing Status	PHS LISTED OCCURRENCE
Sensitive	N
SGCN	N
Display Resolution	AS MAPPED
Geometry Type	Polygons

Shrubsteppe	
Priority Area	Habitat Feature
Site Name	Kittitas County Shrubsteppe
Accuracy	NA
Notes	General location of Shrubsteppe. Confirm or refute with site-scale info. WDFW recommends using site-scale info to inform site-scale land use decisions. Expect that on-the-ground conditions (e.g., boundaries) will vary from the map.
Source Record	920871
Source Name	Keith Folkerts, WDFW
Source Entity	WA Dept. of Fish and Wildlife
Federal Status	N/A
State Status	N/A
PHS Listing Status	PHS LISTED OCCURRENCE
Sensitive	N
SGCN	N
Display Resolution	AS MAPPED
Geometry Type	Polygons

Shrubsteppe	
Priority Area	Habitat Feature
Site Name	Kittitas County Shrubsteppe
Accuracy	NA
Notes	General location of Shrubsteppe. Confirm or refute with site-scale info. WDFW recommends using site-scale info to inform site-scale land use decisions. Expect that on-the-ground conditions (e.g., boundaries) will vary from the map.
Source Record	920871
Source Name	Keith Folkerts, WDFW
Source Entity	WA Dept. of Fish and Wildlife
Federal Status	N/A
State Status	N/A
PHS Listing Status	PHS LISTED OCCURRENCE
Sensitive	N
SGCN	N
Display Resolution	AS MAPPED
Geometry Type	Polygons

Shrubsteppe	
Priority Area	Habitat Feature
Site Name	Kittitas County Shrubsteppe
Accuracy	NA
Notes	General location of Shrubsteppe. Confirm or refute with site-scale info. WDFW recommends using site-scale info to inform site-scale land use decisions. Expect that on-the-ground conditions (e.g., boundaries) will vary from the map.
Source Record	920871
Source Name	Keith Folkerts, WDFW
Source Entity	WA Dept. of Fish and Wildlife
Federal Status	N/A
State Status	N/A
PHS Listing Status	PHS LISTED OCCURRENCE
Sensitive	N
SGCN	N
Display Resolution	AS MAPPED
Geometry Type	Polygons

Shrubsteppe	
Priority Area	Habitat Feature
Site Name	Kittitas County Shrubsteppe
Accuracy	NA
Notes	General location of Shrubsteppe. Confirm or refute with site-scale info. WDFW recommends using site-scale info to inform site-scale land use decisions. Expect that on-the-ground conditions (e.g., boundaries) will vary from the map.
Source Record	920871
Source Name	Keith Folkerts, WDFW
Source Entity	WA Dept. of Fish and Wildlife
Federal Status	N/A
State Status	N/A
PHS Listing Status	PHS LISTED OCCURRENCE
Sensitive	N
SGCN	N
Display Resolution	AS MAPPED
Geometry Type	Polygons

Shrubsteppe	
Priority Area	Habitat Feature
Site Name	Kittitas County Shrubsteppe
Accuracy	NA
Notes	General location of Shrubsteppe. Confirm or refute with site-scale info. WDFW recommends using site-scale info to inform site-scale land use decisions. Expect that on-the-ground conditions (e.g., boundaries) will vary from the map.
Source Record	920871
Source Name	Keith Folkerts, WDFW
Source Entity	WA Dept. of Fish and Wildlife
Federal Status	N/A
State Status	N/A
PHS Listing Status	PHS LISTED OCCURRENCE
Sensitive	N
SGCN	N
Display Resolution	AS MAPPED
Geometry Type	Polygons

Biodiversity Areas And Corridor	
Priority Area	Terrestrial Habitat
Site Name	Columbia Plateau Regional Biodiversity Corridors
Accuracy	NA
Notes	Ecoregionally important corridors enabling species movement among key areas. Large, intact, landscapes support population viability of native species. Relevant to regional planning for open space, land use intensity, major projects
Source Record	920901
Source Name	Jeff Azerrad WDFW
Source Entity	WA Dept. of Fish and Wildlife
Federal Status	N/A
State Status	N/A
PHS Listing Status	PHS LISTED OCCURRENCE
Sensitive	N
SGCN	N
Display Resolution	AS MAPPED
ManagementRecommendations	http://wdfw.wa.gov/publications/pub.php?id=00023
Geometry Type	Polygons

Golden eagle	
Scientific Name	<i>Aquila chrysaetos</i>
Notes	This polygon mask represents one or more records of the above species or habitat occurrence. Contact PHS Data Release at phsproducts@dfw.wa.gov for obtaining information about masked sensitive species and habitats.
State Status	Candidate
PHS Listing Status	PHS Listed Occurrence
Sensitive	Y
SGCN	Y
Display Resolution	TOWNSHIP
ManagementRecommendations	http://wdfw.wa.gov/publications/pub.php?id=00026

DISCLAIMER. This report includes information that the Washington Department of Fish and Wildlife (WDFW) maintains in a central computer database. It is not an attempt to provide you with an official agency response as to the impacts of your project on fish and wildlife. This information only documents the location of fish and wildlife resources to the best of our knowledge. It is not a complete inventory and it is important to note that fish and wildlife resources may occur in areas not currently known to WDFW biologists, or in areas for which comprehensive surveys have not been conducted. Site specific surveys are frequently necessary to rule out the presence of priority resources. Locations of fish and wildlife resources are subject to variation caused by disturbance, changes in season and weather, and other factors. WDFW does not recommend using reports more than six months old.